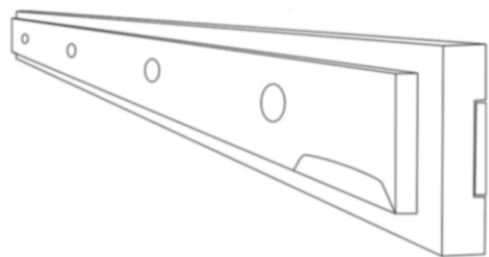
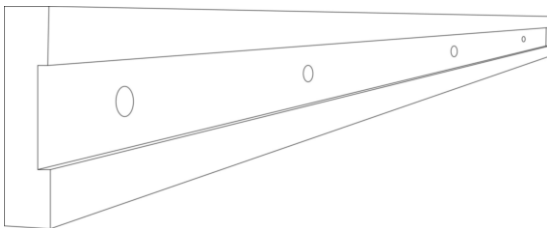
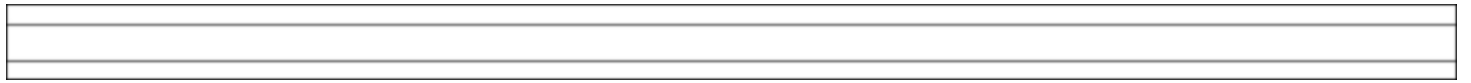
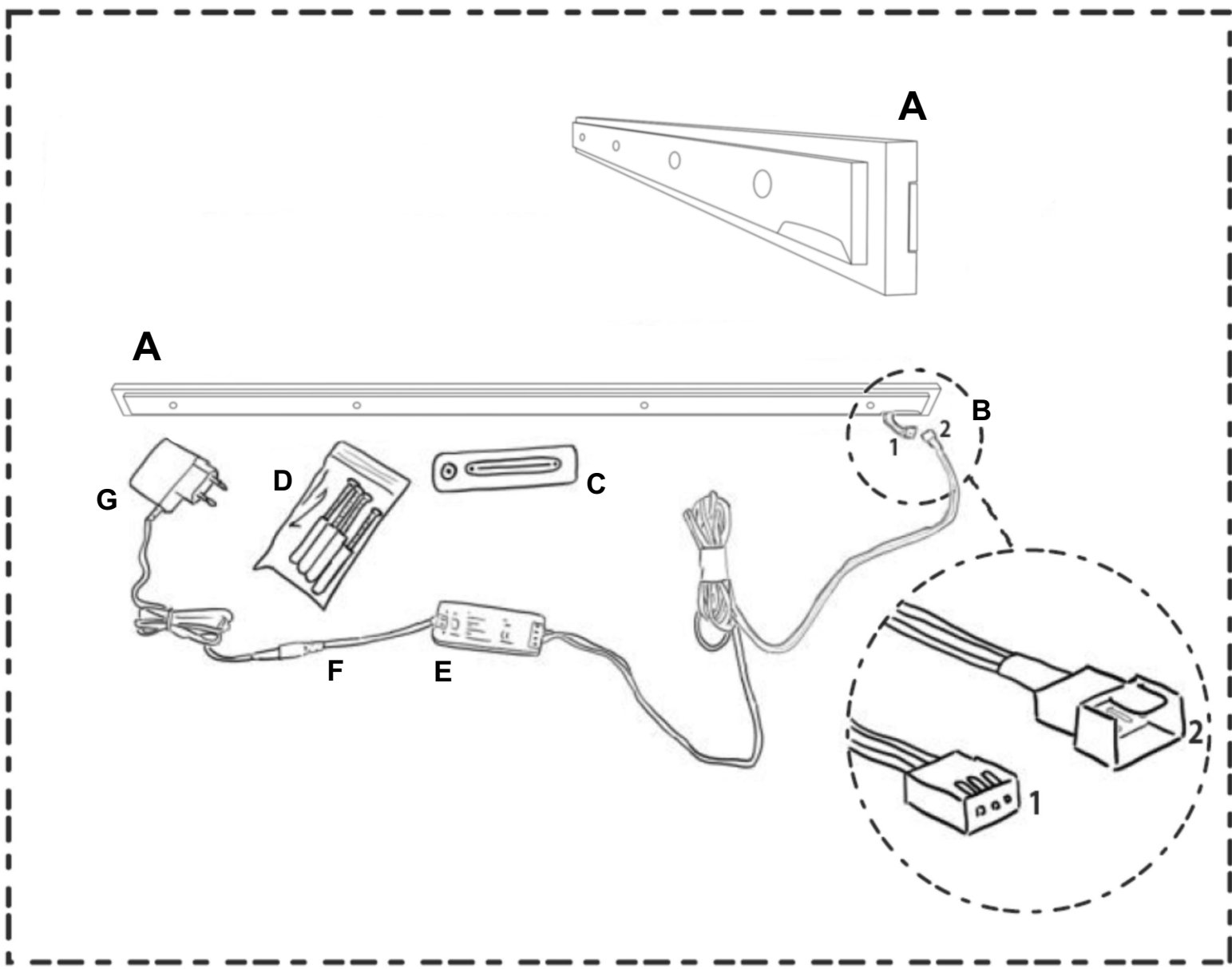


# Strackk<sup>®</sup>

**Strackk light**



**Congratulations on your  
purchase!**



- |                      |   |  |
|----------------------|---|--|
| <b>A</b>             | — | <b>Strackk light with tunable LED strip</b>    |
| <b>B<sub>1</sub></b> | — | <b>Short cord connector from Strackk light</b> |
| <b>B<sub>2</sub></b> | — | <b>Connector with long cord</b>                |
| <b>C</b>             | — | <b>Remote control</b>                          |
| <b>D</b>             | — | <b>Screws and plugs</b>                        |
| <b>E</b>             | — | <b>Controller</b>                              |
| <b>F</b>             | — | <b>Connector power adapter to controller</b>   |
| <b>G</b>             | — | <b>Power adapter</b>                           |

1

Take the Strackk light (A) out of the box.

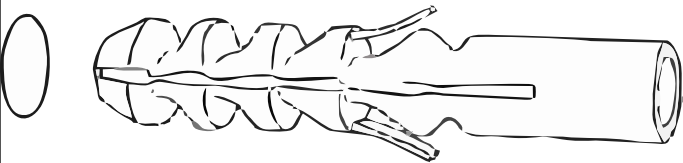
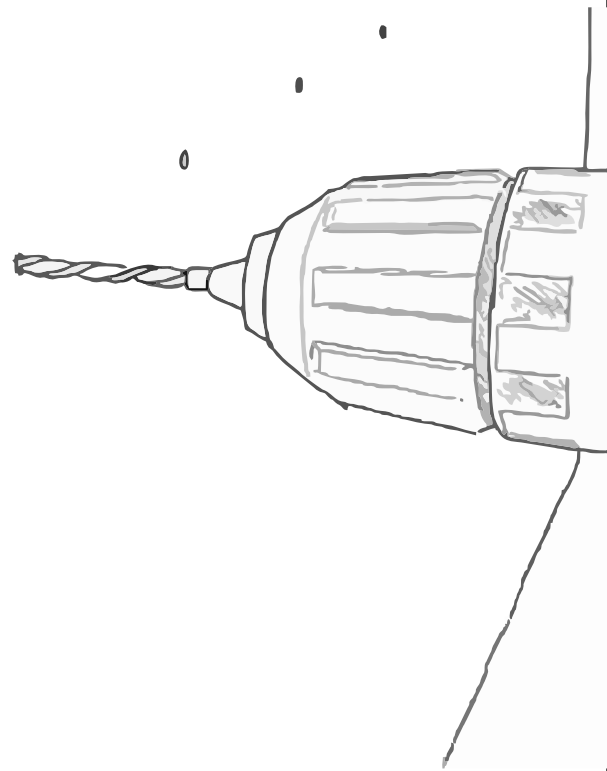
2

Use a 10mm drill to drill holes.



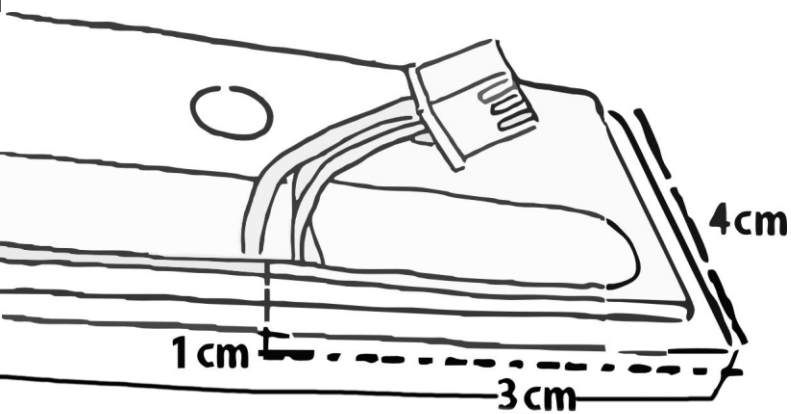
3

Insert the plugs (D) into the holes provided.  
Make sure the plug goes fully into the wall.  
(so that no plug edges protrude from the wall)

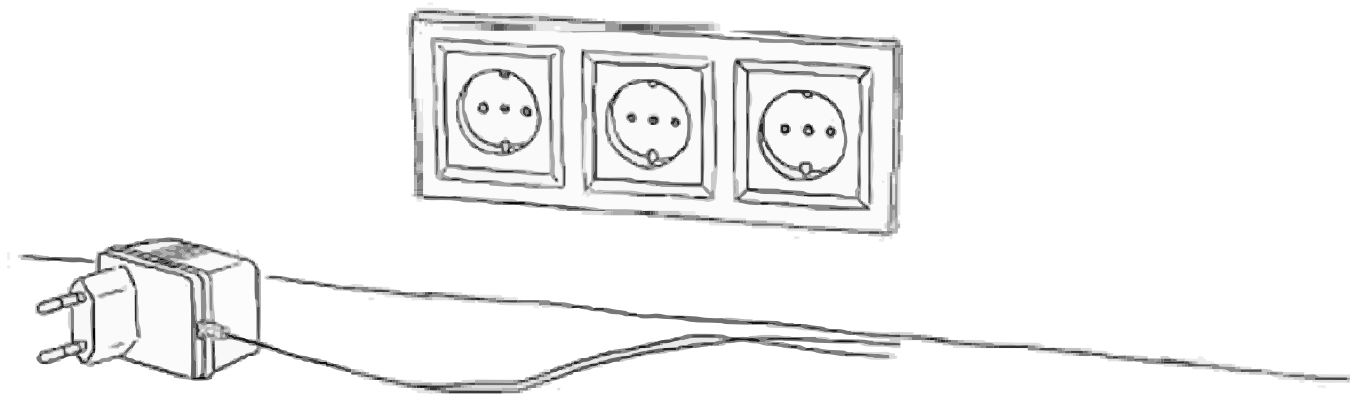


Note: a Strackk light with lighting can not be connected directly to 220v. Just plug it in when everything is connected.

The plug for the LED lighting

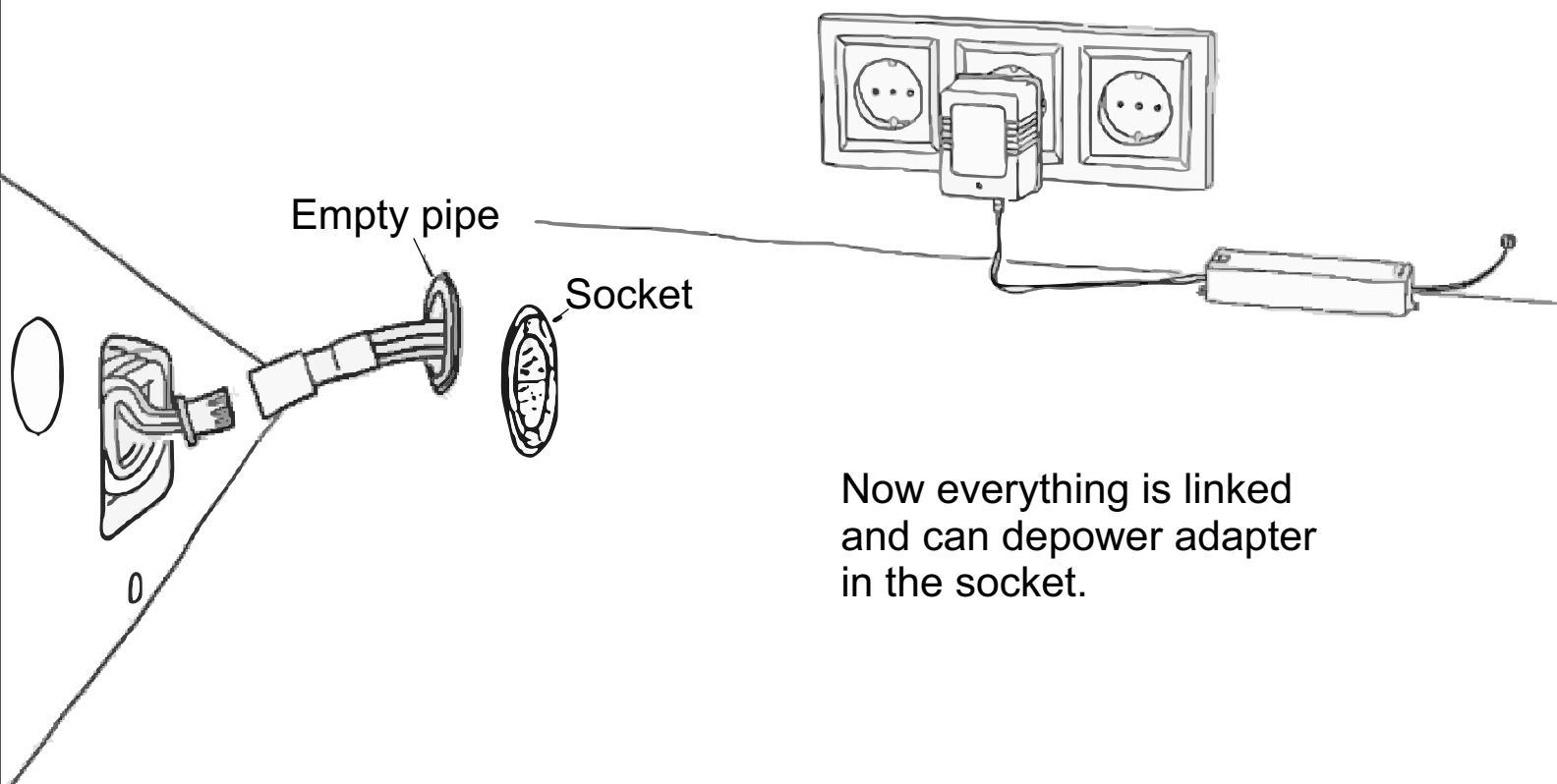


The Strackk light can now be connected to the cable with the plug connected. Place the plug (G) at the desired socket. For example, a socket in a cupboard or behind the curtain so that it is not visible. Connect the controller (E) to the power adapter (G).

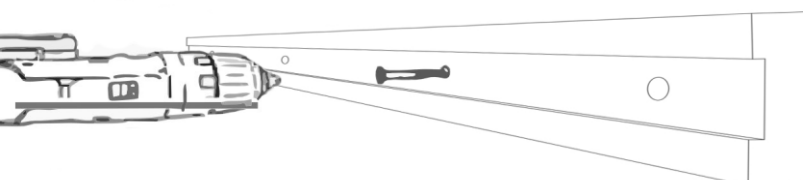


The controller (E) has a 3 meter long cord (B2), which you put through an empty pipe or milling in the wall can pull to come out of the wall and pair on the short cord (B1) from the Strackk light.

The empty pipe needs a diameter of at least  $1\text{cm}^2$  so that the connector (F) can pass through it. Disconnect the connector from the Strackk light (A) to the connector of the controller (E).



Then place the Strackk light against the wall exactly where the hole pattern of the plank is correct. Align with the screw holes in the wall. There is a recess for the plug on the cable in the back on the Strackk light.



Note: the cable is not allowed between the wall and the light

8

Start by semi-tightening a screw in the center of the plank. Then tighten of the screws from the left to right.

Place the supplied magnetic strip in front of the screw holes to cover it nicely.

9

Note: when using the remote control for the first time, remove the foil on the battery. The on/off button on the remote control is also the dim button. By pressing it subtly you can dim the lighting.

**Have fun with Strackk!**

# Technical information

The Strackk light with lighting comes complete with supplied with the necessary accessories.

A power adapter (24 Volt), a controller with remote control, and the cabling. In the case of Hue, Philips has no special Hue product for our application and we deliver the Zigbee 3.0 controller that can be connected with Hue.

However, a Bridge must be included in your system. The Bridge is not included in the Strackk delivery.

If desired, you can insert the Power adapter and the controller invisibility get rid of a closet or something like that. The relevant controller is registered with this Bridge and so the shelf with lighting becomes part of your light system.

The whole is pre-assembled and can be used with a number of plug connections.

**Note:** Strackk bears no responsibility for the link itself and the operation of non-Strackk products. If you do not have (electronic) technical experience or knowledge, we advise you to use the link and installation by an electrician or specialist.

# Specifications

## Power adaptor

24 Volt DC, resp. 12, 24, 36 or 60 Watt Input voltage 230 Volt.  
The power adapter is incorporated in the plug. From shelves longer than 2 meters, the power adapter is a separate box with a size of 11 x 3.4 x 1.8 cm or larger.

Strackk light length	Max consumption	Controller (LXBXH)	Remote control
0 - 90 cm	12 W	11 x 3,4x 1,8 cm	13,5x4x1,2
91 - 160 cm	24 W	11 x 3,4x 1,8 cm	
161 - 240 cm	36 W	11 x 3,4x 1,8 cm	
241 - 400 cm	60 W	11 x 3,4x 1,8 cm	

## Remote Control

You can adjust the light color, from yellow to white, by subtly sliding up and down under the on/off button. You can dim the light intensity by holding the on/off button longer for softer and harder light.

Power consumption	14 W / metre
Luminous flux	1000-2000 LM / metre
Temperature	2 00-6500 Kelvin
CRI	90 %
Dimmable	Yes