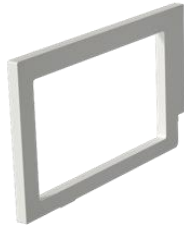


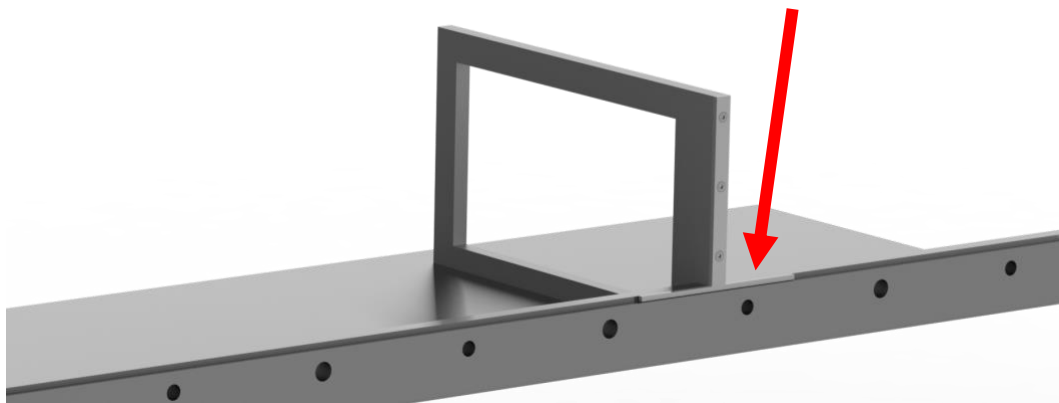
Strackk[®]

MANUAL BOOKEND STRACKK

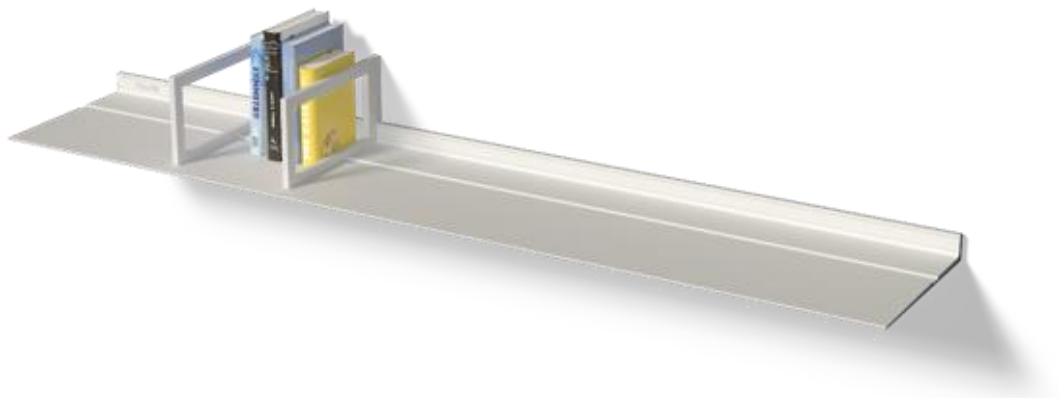
1. Take the Strackk Bookend out of the box.



2. Take the 2 screws and the metal bracket out of the packaging.
3. The metal bracket must be mounted with the large holes to the outside.
4. Place the metal bracket in the recess of the bookend.
5. Tighten the 2 screws. The back of the bookend is now flat.
6. Place the bookend with the metal bracket behind the recess of the upright edge of the Strackk Shelf.



7. Your Strackk bookend is ready for use.



Have fun with your Strackk Bookend!

If you have any questions? Mail to info@strackk.com or call +31 (0) 85 303 61 91